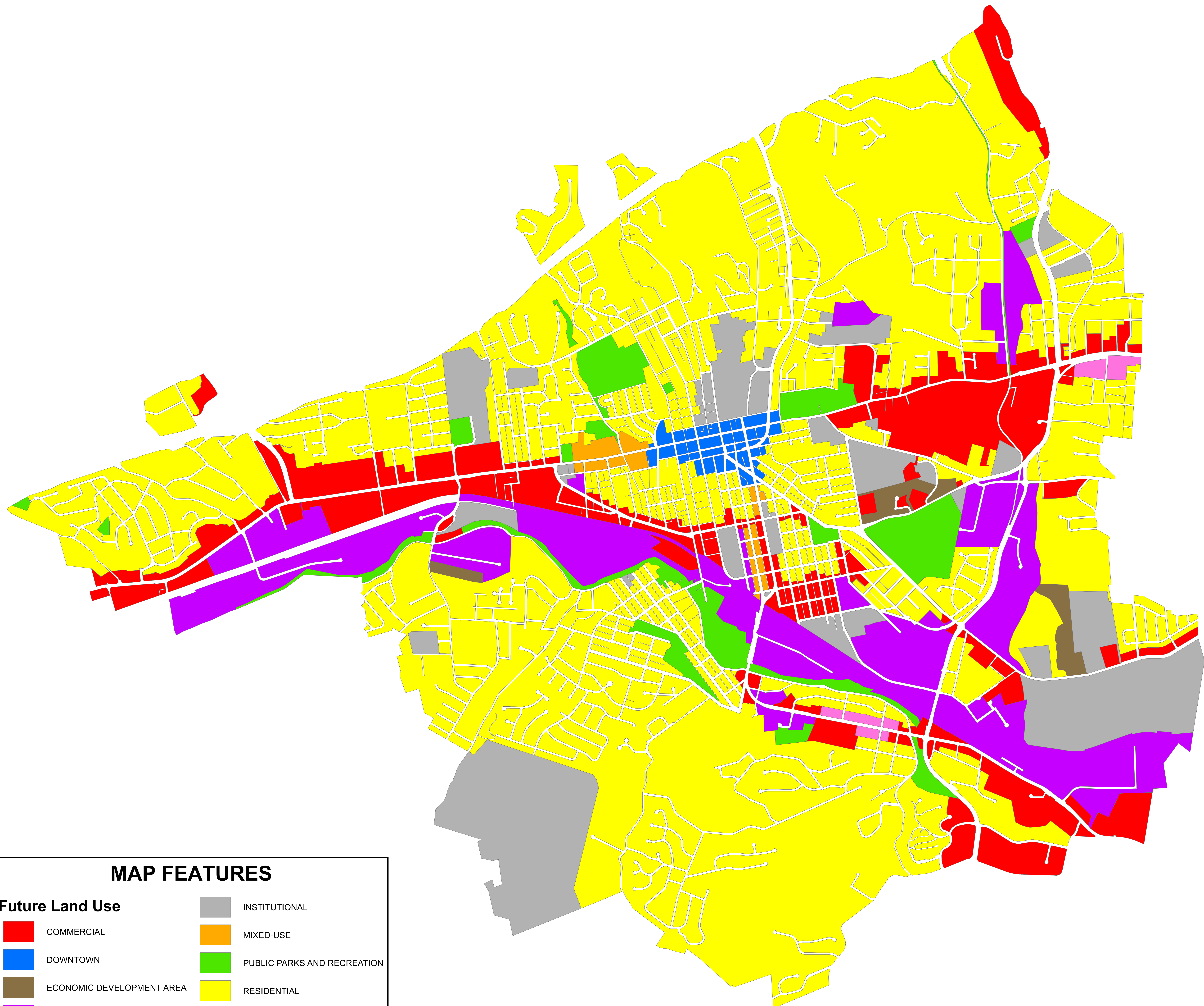


CITY OF SALEM
ENGINEERING and
INSPECTIONS
DEPARTMENT
Geographic Information Systems Division
25 East Main Street
P.O. Box 869
Salem, Virginia 24153-0869
Phone: (540) 375-3032

OFFICIAL FUTURE GENERALIZED LAND USE MAP



0 800 1,600
Feet

Scale:
1 inch = 800 feet

Date:
June 11, 2012

Project File:
N:\GIS\ArcMap_projects\2012\
FutureLandUse.mxd

The mapped information has been compiled from City Tax map records, USGS census data, Virginia Department of Transportation base mapping and 1992 Aerial Photography. Horizontal control is based on the North American Geodetic Vertical Datum of 1983. It has been computed on the Virginia State Plane NAD 83, South Zone, complying with the National Map Accuracy Standards. Efforts have been made to verify the information shown hereon. The City of Salem assumes no liability for damages arising from errors or omissions. The information is deemed accurate, but not warranted. Please notify the City of Salem Engineering Department of any inconsistency.

MAP FEATURES

Future Land Use

- | | | | |
|--|---------------------------|---|-----------------------------|
|  | COMMERCIAL |  | INSTITUTIONAL |
|  | DOWNTOWN |  | MIXED-USE |
|  | ECONOMIC DEVELOPMENT AREA |  | PUBLIC PARKS AND RECREATION |
|  | INDUSTRIAL |  | RESIDENTIAL |
| | |  | TRANSITIONAL |