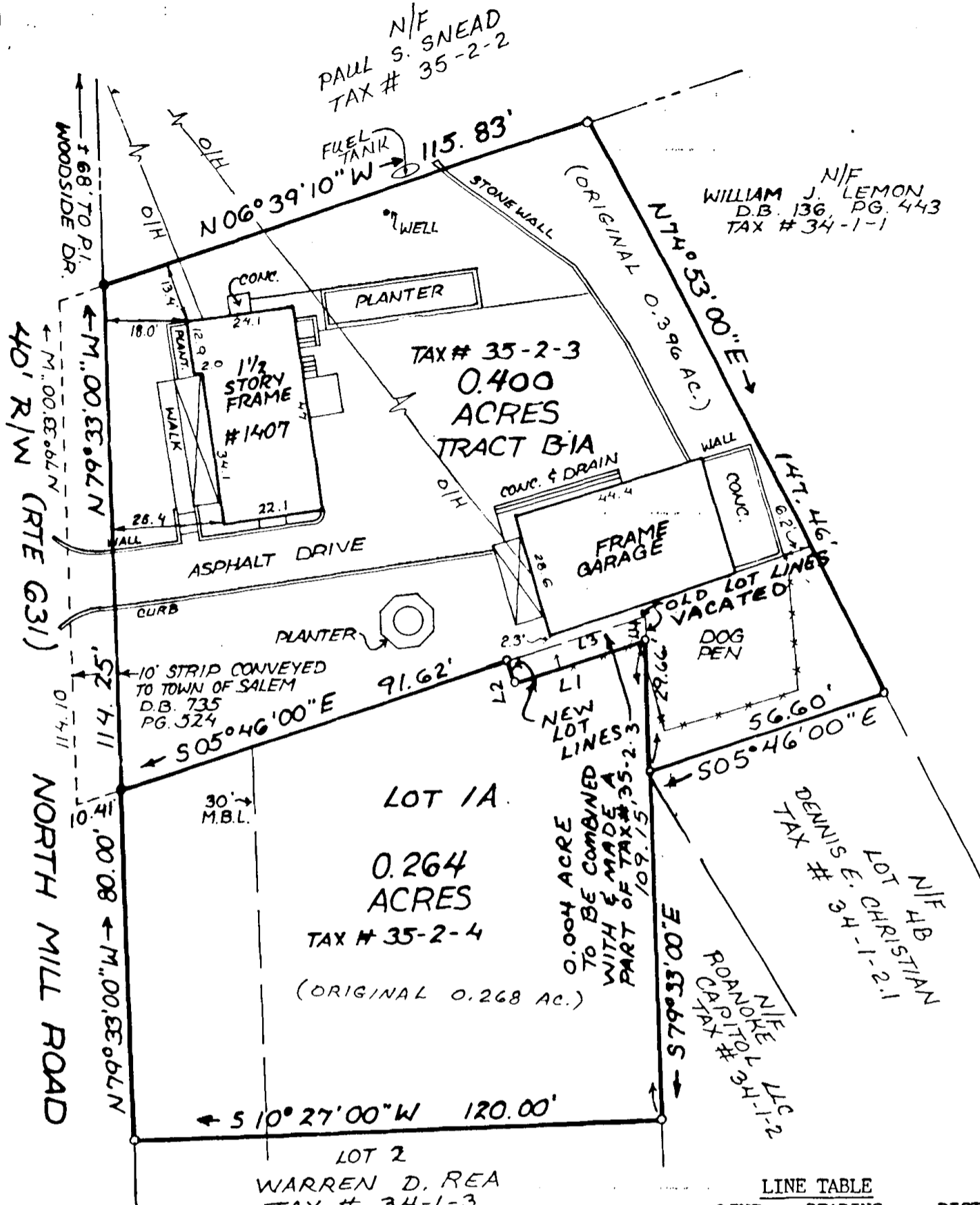




LEGEND
 ○ IRON PIN SET
 ● IRON PIN FOUND
 D.B. 277, PG. 510
 SCALE: 1" = 30'



APPROVED:

James P. ...
 CITY ENGINEER, CITY OF SALEM

6/8/98
 DATE

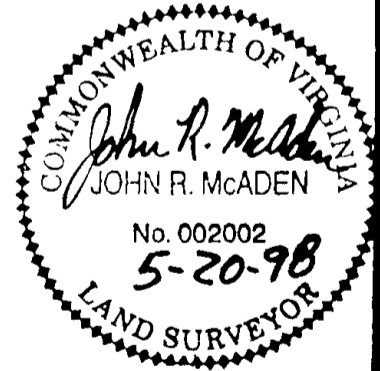
Forest ...
 EXECUTIVE SECRETARY, CITY OF SALEM PLANNING COMMISSION

6/8/98
 DATE

LINE TABLE

LINE	BEARING	DISTANCE
L1	S 06°12'00" E	31.71'
L2	S 83°48'00" W	5.76'
L3	N 05°46'00" W	33.35'
L4	S 79°33'00" E	5.75'

IN THE CLERK'S OFFICE FOR THE CIRCUIT COURT OF THE CITY OF SALEM, VIRGINIA, THIS PLAT WAS PRESENTED AND WITH THE CERTIFICATE OF ACKNOWLEDGEMENT THERETO ANNEXED, ADMITTED TO RECORD AT 359 O'CLOCK P.M. ON THIS 8TH DAY OF JUNE, 1998, IN PLAT BOOK 7, PAGE 26. SLIDE 149



TESTE: Chance Crawford
 CLERK
Melinda K. Yates
 DEPUTY CLERK

NOTES:

- OWNERS OF RECORD: LOUIS WYSONG RIBBLE, JR. AND ILEDA M. RIBBLE
- LEGAL REFERENCE: DEED BOOK 277, PAGE 510 (TRACT B-1A) DEED BOOK 239, PAGE 41 (LOT 1A)
- NO TITLE REPORT FURNISHED
- PROPERTY IS IN F.E.M.A. DEFINED ZONE X UNSHADED

RESUBDIVISION PLAT FOR
 JEFFRY LYNN SANDERS
 AND
 SUSAN LEONARD SANDERS

1407 NORTH MILL ROAD
 0.004 ACRE FROM TAX #35-2-4 COMBINED
 WITH TAX MAP #35-2-3 TO CREATE
 TRACT B-1A (0.400 ACRE)
 AND LOT 1A (0.264 ACRE)
 CITY OF SALEM, VIRGINIA
 SURVEYED MAY 20, 1998
 JOB NUMBER R9810031



SCALE: 1" = 30'

