

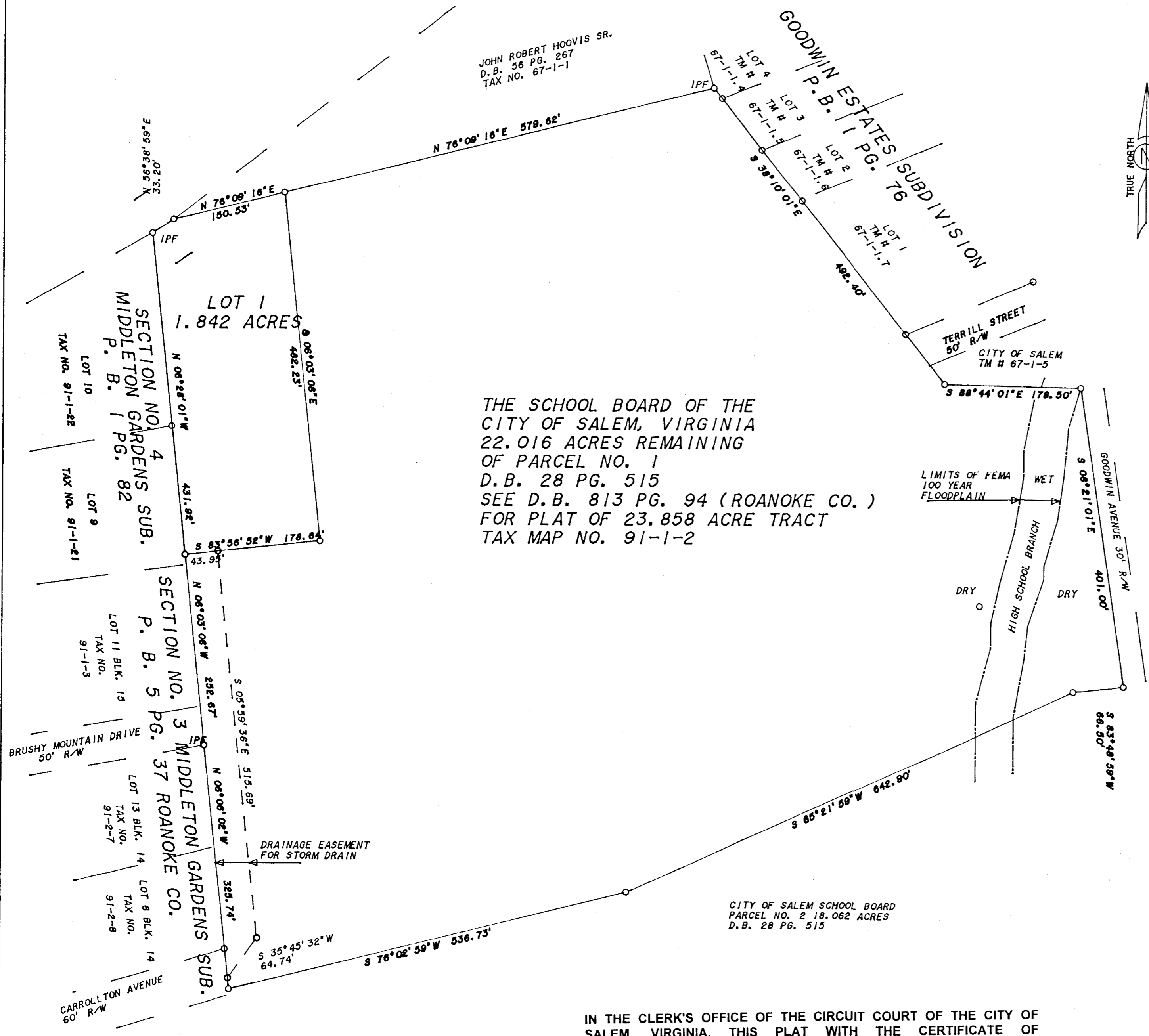
JOHN ROBERT HOOVIS SR.
D.B. 56 PG. 267
TAX NO. 67-1-1

NOTES:

1. THIS PLAT MAY BE SUBJECT TO INFORMATION WHICH MAY BE DISCLOSED BY A TITLE REPORT BY A LICENSED ATTORNEY.
2. THE SUBJECT PROPERTY IS WITHIN THE LIMITS OF ZONE AE AND ZONE X AS SHOWN ON THE FEMA FLOOD INSURANCE RATE MAP. THIS DETERMINATION IS BASED ON SAID MAP AND HAS NOT BEEN VERIFIED BY ACTUAL FIELD ELEVATIONS.

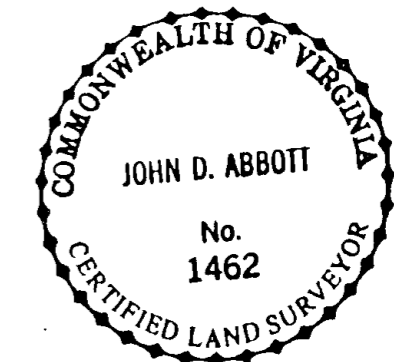
NOTE:

ONLY 1.842 ACRE TRACT WAS SURVEYED IN FIELD. REMAINDER OF PROPERTY WAS PLATTED FROM RECORDS AND ADJUSTED TO STATE PLAIN COORDINATE SYSTEM.



THE SCHOOL BOARD OF THE
CITY OF SALEM, VIRGINIA
22.016 ACRES REMAINING
OF PARCEL NO. 1
D.B. 28 PG. 515
SEE D.B. 813 PG. 94 (ROANOKE CO.)
FOR PLAT OF 23.858 ACRE TRACT
TAX MAP NO. 91-1-2

APPROVED: *Randolph M Smith* 10/16/97
EXECUTIVE SECRETARY, PLANNING COMMISSION DATE
John D Abbott 10/16/97
APPROVED: CITY ENGINEER DATE



SURVEY FOR:
CITY OF SALEM SCHOOL BOARD
BY:
JOHN D. ABBOTT, PE, CLS
CITY OF SALEM ENGINEERING DEPARTMENT
114 NORTH BROAD STREET
SALEM, VA. 24153

CITY OF SALEM SCHOOL BOARD
PARCEL NO. 2 18.062 ACRES
D.B. 28 PG. 515

IN THE CLERK'S OFFICE OF THE CIRCUIT COURT OF THE CITY OF SALEM, VIRGINIA, THIS PLAT WITH THE CERTIFICATE OF ACKNOWLEDGMENT THERETO ANNEXED IS ADMITTED TO RECORD ON October 17, 1997, AT 9:37 O'CLOCK A.M.

TESTE: CHANCE CRAWFORD, CLERK
BY: *Melinda Klyates*
DEPUTY CLERK

DATE: OCTOBER 10, 1997
SCALE: 1" = 100'
SOURCE: D.B. 28 PG. 515
TAX # 91-1-2
JOB NO. SALEMHS
REVISED DATE: 10-16-97

Inst # 3213