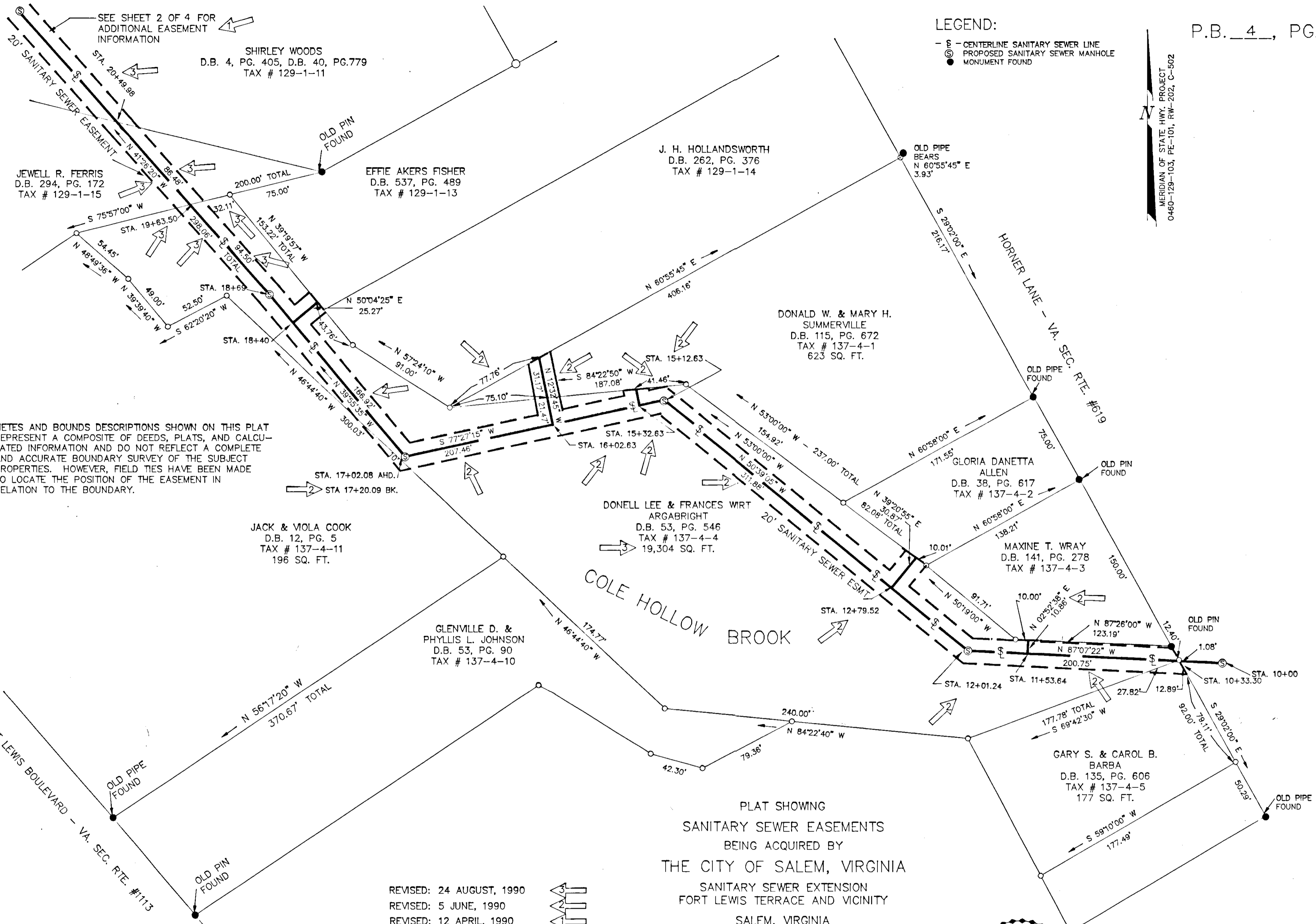


LEGEND:

- E - CENTERLINE SANITARY SEWER LINE
- ⊙ - PROPOSED SANITARY SEWER MANHOLE
- - MONUMENT FOUND

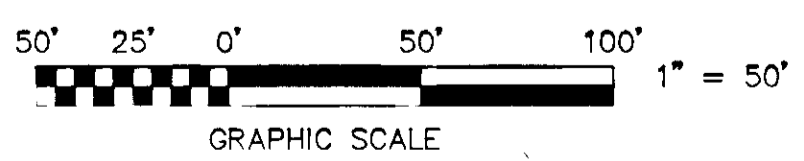
N  
 MERIDIAN OF STATE HWY. PROJECT  
 0460-129-103, PE-101, RW-202, C-502



METES AND BOUNDS DESCRIPTIONS SHOWN ON THIS PLAT REPRESENT A COMPOSITE OF DEEDS, PLATS, AND CALCULATED INFORMATION AND DO NOT REFLECT A COMPLETE AND ACCURATE BOUNDARY SURVEY OF THE SUBJECT PROPERTIES. HOWEVER, FIELD TIES HAVE BEEN MADE TO LOCATE THE POSITION OF THE EASEMENT IN RELATION TO THE BOUNDARY.

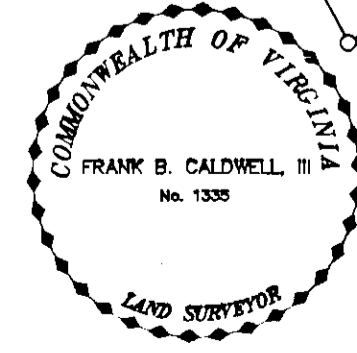
PLAT SHOWING  
 SANITARY SEWER EASEMENTS  
 BEING ACQUIRED BY  
 THE CITY OF SALEM, VIRGINIA  
 SANITARY SEWER EXTENSION  
 FORT LEWIS TERRACE AND VICINITY  
 SALEM, VIRGINIA

REVISED: 24 AUGUST, 1990  
 REVISED: 5 JUNE, 1990  
 REVISED: 12 APRIL, 1990



SCALE: 1" = 50'  
 DATE: SEPT. 22, 1989  
 N.B.: CITY OF SALEM

DRAWN: LRD/CADD  
 W.O. 89-0366  
 CALC: LRD

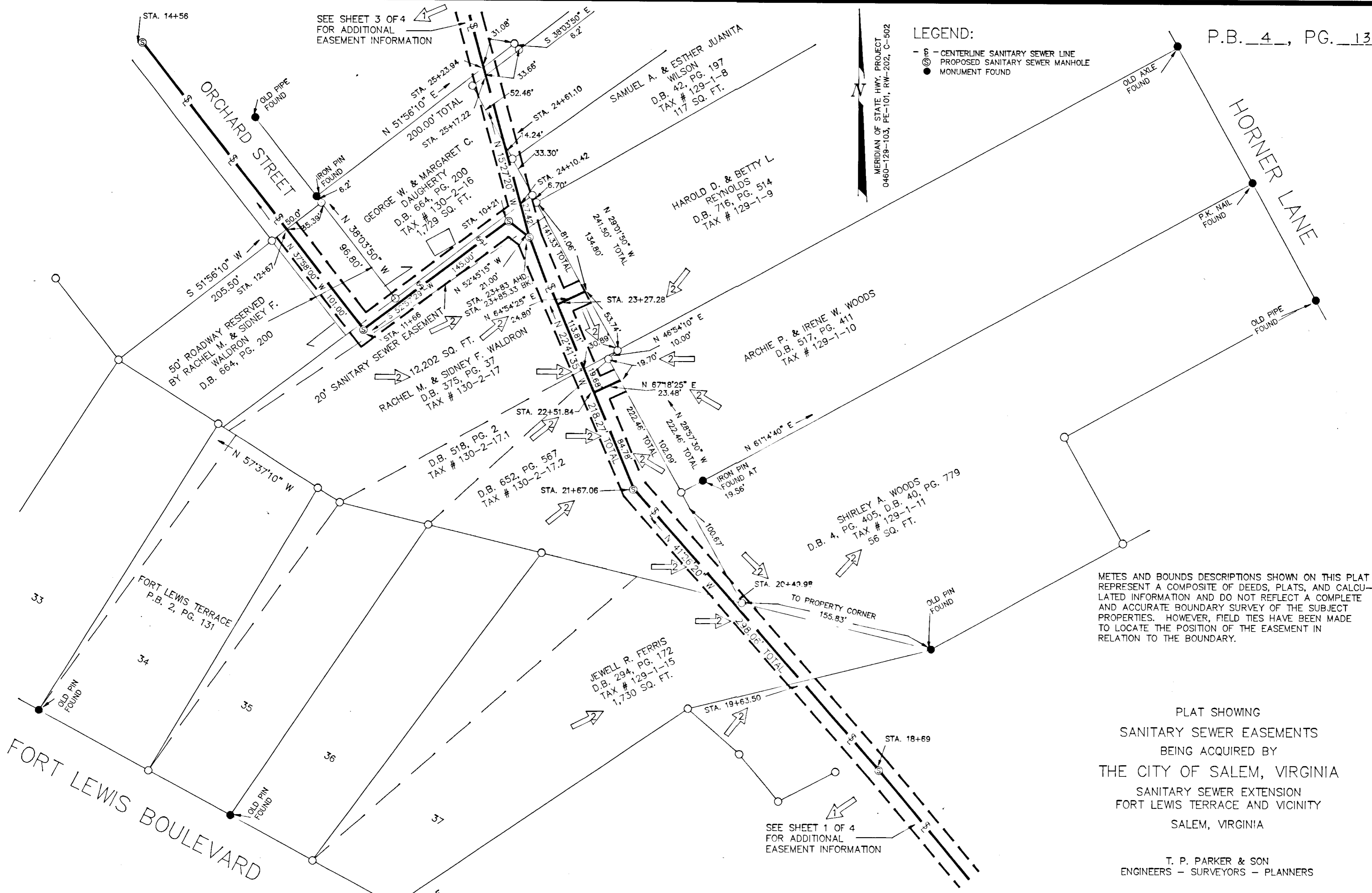


IN THE CLERK'S OFFICE OF THE CIRCUIT COURT OF THE CITY OF SALEM, VIRGINIA THIS MAP WAS PRESENTED WITH THE CERTIFICATE OF ACKNOWLEDGMENT THERETO ATTACHED ADMITTED TO RECORD AT 3:44 O'CLOCK P.M. ON THIS 18 DAY OF September 1990.

TESTE: JUNE LEE HIGGS  
 CLERK  
 BY: *Carol W. Kiffe*  
 DEPUTY CLERK

LEGEND:  
- S - CENTERLINE SANITARY SEWER LINE  
⊙ - PROPOSED SANITARY SEWER MANHOLE  
● - MONUMENT FOUND

MERIDIAN OF STATE HWY. PROJECT  
0460-129-103, PE-101, RW-202, C-502



METES AND BOUNDS DESCRIPTIONS SHOWN ON THIS PLAT REPRESENT A COMPOSITE OF DEEDS, PLATS, AND CALCULATED INFORMATION AND DO NOT REFLECT A COMPLETE AND ACCURATE BOUNDARY SURVEY OF THE SUBJECT PROPERTIES. HOWEVER, FIELD TIES HAVE BEEN MADE TO LOCATE THE POSITION OF THE EASEMENT IN RELATION TO THE BOUNDARY.

PLAT SHOWING  
SANITARY SEWER EASEMENTS  
BEING ACQUIRED BY  
THE CITY OF SALEM, VIRGINIA  
SANITARY SEWER EXTENSION  
FORT LEWIS TERRACE AND VICINITY  
SALEM, VIRGINIA

T. P. PARKER & SON  
ENGINEERS - SURVEYORS - PLANNERS

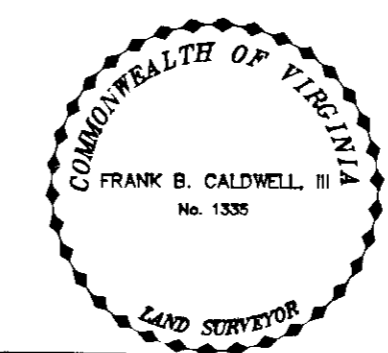
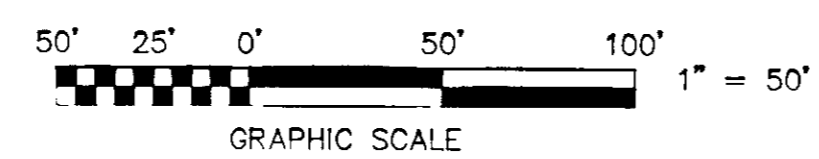
SCALE: 1" = 50'  
DATE: SEPT. 22, 1989  
N.B.: CITY OF SALEM

DRAWN: LRD/CADD  
W.O. 89-0366  
CALC: LRD

IN THE CLERK'S OFFICE OF THE CIRCUIT COURT OF THE CITY OF SALEM, VIRGINIA THIS MAP WAS PRESENTED WITH THE CERTIFICATE OF ACKNOWLEDGMENT THERETO ATTACHED ADMITTED TO RECORD AT 3:44 O'CLOCK P.M. ON THIS 18 DAY OF September, 1990.

TESTE: JUNE LEE HIGGS  
CLERK  
BY: *Karen W. Keefe*  
DEPUTY CLERK

REVISED: 24 AUGUST, 1990  
REVISED: 12 APRIL, 1990

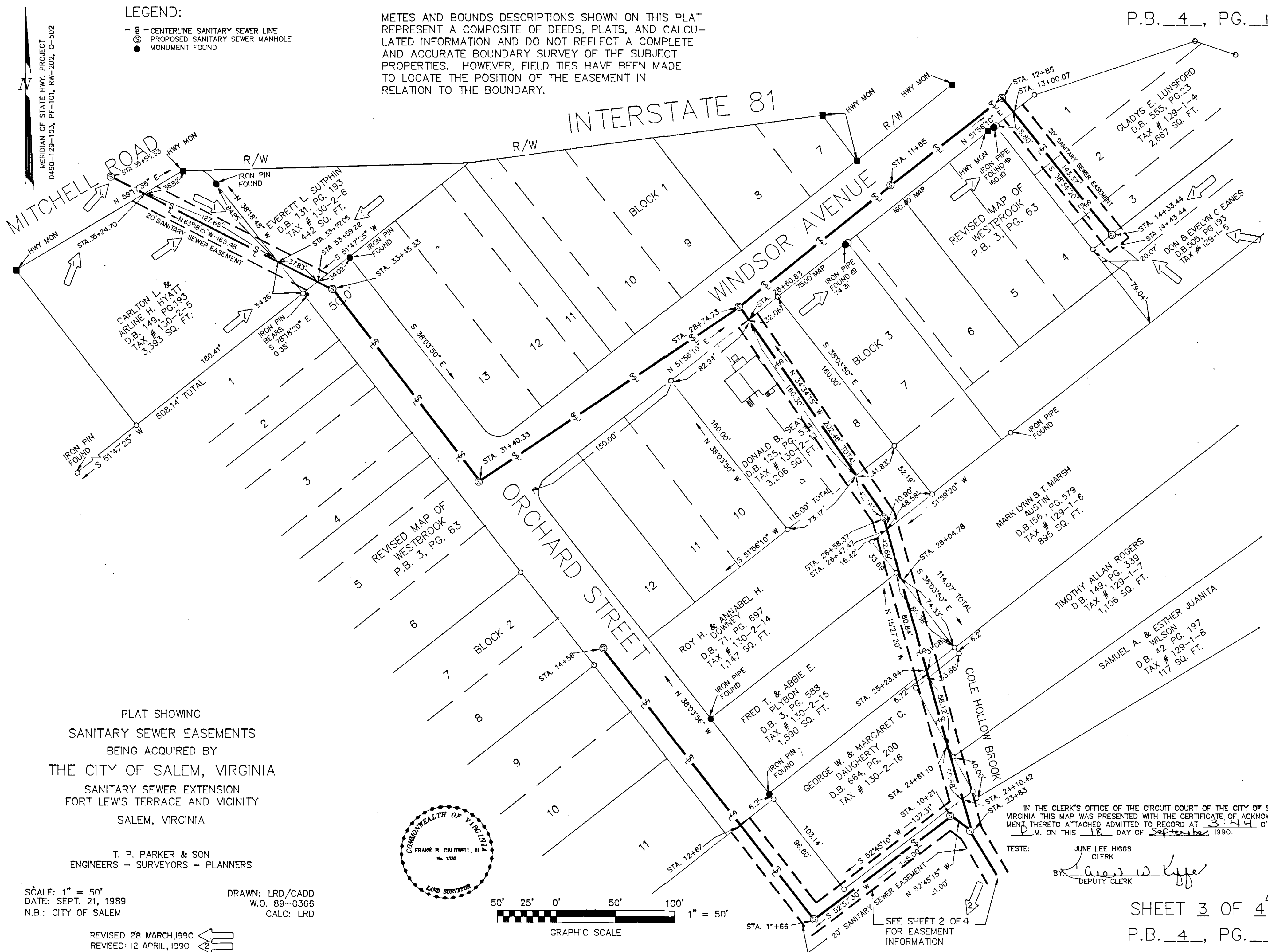


CLOSED TO LOT CORNERS  
8-29-90 LRD

LEGEND:

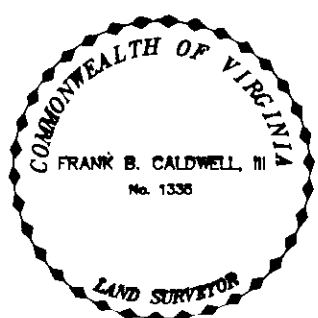
- S - CENTERLINE SANITARY SEWER LINE
- ⊙ - PROPOSED SANITARY SEWER MANHOLE
- - MONUMENT FOUND

METES AND BOUNDS DESCRIPTIONS SHOWN ON THIS PLAT REPRESENT A COMPOSITE OF DEEDS, PLATS, AND CALCULATED INFORMATION AND DO NOT REFLECT A COMPLETE AND ACCURATE BOUNDARY SURVEY OF THE SUBJECT PROPERTIES. HOWEVER, FIELD TIES HAVE BEEN MADE TO LOCATE THE POSITION OF THE EASEMENT IN RELATION TO THE BOUNDARY.



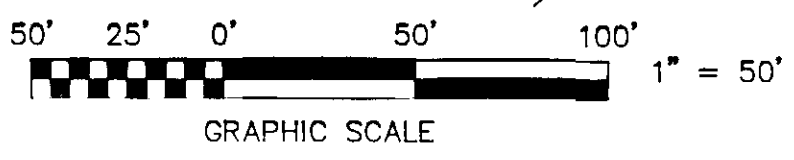
PLAT SHOWING  
 SANITARY SEWER EASEMENTS  
 BEING ACQUIRED BY  
 THE CITY OF SALEM, VIRGINIA  
 SANITARY SEWER EXTENSION  
 FORT LEWIS TERRACE AND VICINITY  
 SALEM, VIRGINIA

T. P. PARKER & SON  
 ENGINEERS - SURVEYORS - PLANNERS



SCALE: 1" = 50'  
 DATE: SEPT. 21, 1989  
 N.B.: CITY OF SALEM

DRAWN: LRD/CADD  
 W.O. 89-0366  
 CALC: LRD



IN THE CLERK'S OFFICE OF THE CIRCUIT COURT OF THE CITY OF SALEM, VIRGINIA THIS MAP WAS PRESENTED WITH THE CERTIFICATE OF ACKNOWLEDGMENT THERETO ATTACHED ADMITTED TO RECORD AT 3:44 O'CLOCK P.M. ON THIS 18 DAY OF September, 1990.

TESTE:  
 JUNE LEE HIGGS  
 CLERK  
 BY: *June Lee Higgs*  
 DEPUTY CLERK

SHEET 3 OF 4  
 P.B. 4, PG. 14

CLOSED TO LOT CORNERS  
 10-18-89 LRD

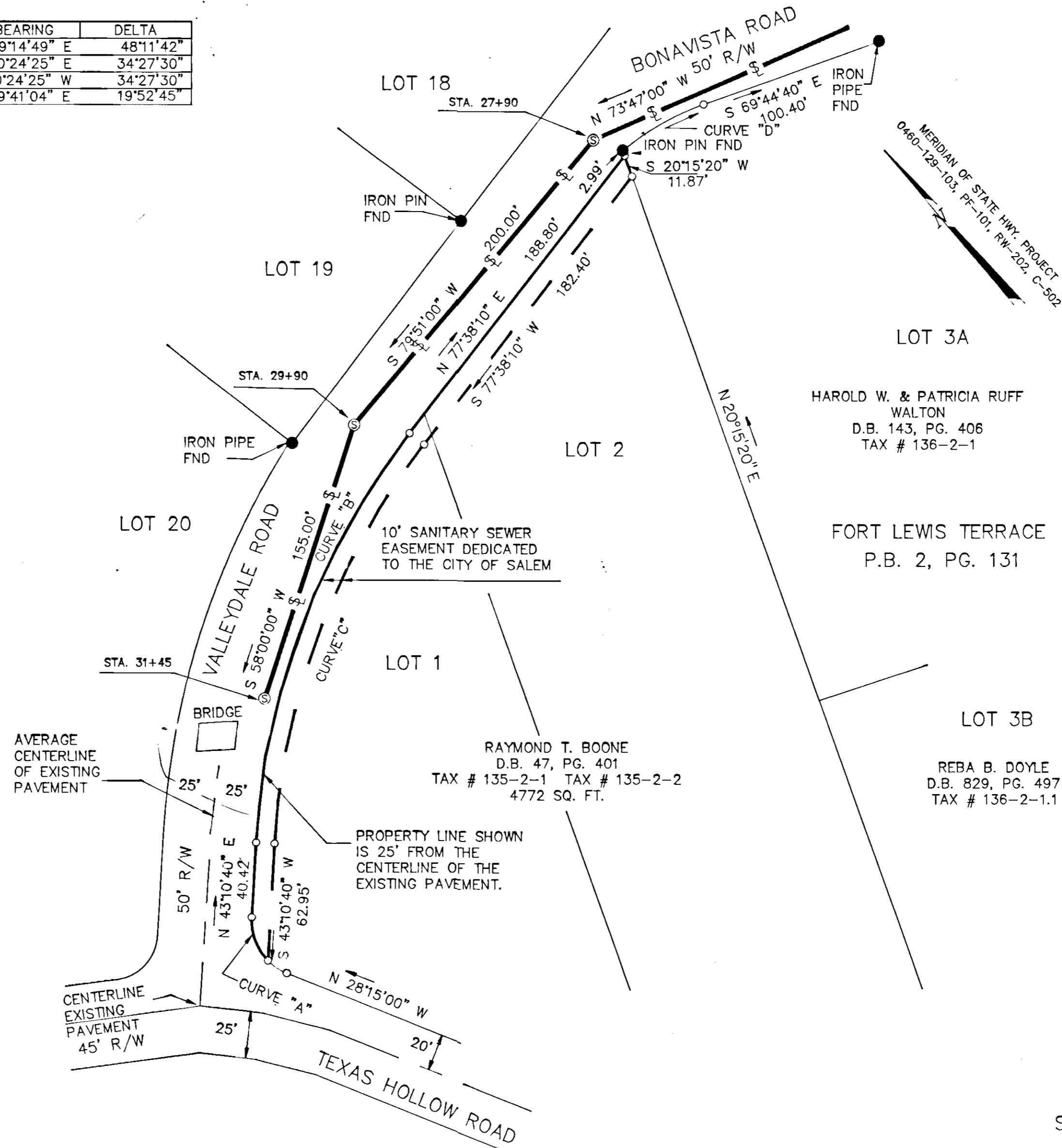
CURVE	RADIUS	LENGTH	TANGENT	CHORD	BEARING	DELTA
CURVE "A"	30.19'	25.39'	13.50'	24.65'	N 19°14'49" E	48°11'42"
CURVE "B"	396.73'	238.60'	123.03'	235.02'	N 60°24'25" E	34°27'30"
CURVE "C"	386.73'	232.58'	119.93'	229.09'	S 60°24'25" W	34°27'30"
CURVE "D"	144.57'	50.16'	25.33'	49.91'	S 79°41'04" E	19°52'45"

METES AND BOUNDS DESCRIPTIONS SHOWN ON THIS PLAT REPRESENT A COMPOSITE OF DEEDS, PLATS, AND CALCULATED INFORMATION AND DO NOT REFLECT A COMPLETE AND ACCURATE BOUNDARY SURVEY OF THE SUBJECT PROPERTIES. HOWEVER, FIELD TIES HAVE BEEN MADE TO LOCATE THE POSITION OF THE EASEMENT IN RELATION TO THE BOUNDARY.

LEGEND:

- S - CENTERLINE SANITARY SEWER LINE
- ⊙ PROPOSED SANITARY SEWER MANHOLE
- MONUMENT FOUND

METES AND BOUNDS DESCRIPTIONS SHOWN ON MAP OF FORT LEWIS TERRACE RECORDED IN P.B. 2, PG. 131 DO NOT AGREE WITH MONUMENTS LOCATED IN THE FIELD. FIELD TIES HAVE BEEN MADE TO LOCATE THE POSITION OF THE EASEMENT IN RELATION TO THE EXISTING CENTERLINES OF VALLEYDALE ROAD AND TEXAS HOLLOW ROAD AND PROPERTY LINES.

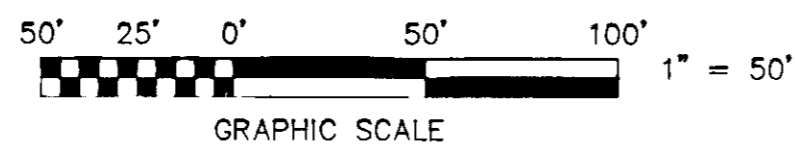
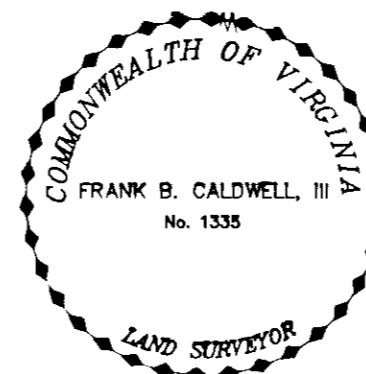


PLAT SHOWING  
 SANITARY SEWER EASEMENTS  
 BEING ACQUIRED BY  
 THE CITY OF SALEM, VIRGINIA  
 SANITARY SEWER EXTENSION  
 FORT LEWIS TERRACE AND VICINITY  
 SALEM, VIRGINIA

T. P. PARKER & SON  
 ENGINEERS - SURVEYORS - PLANNERS

SCALE: 1" = 50'  
 DATE: APRIL 10, 1990  
 N.B.: CITY OF SALEM

DRAWN: LRD/CADD  
 W.O. 89-0366  
 CALC: LRD



IN THE CLERK'S OFFICE OF THE CIRCUIT COURT OF THE CITY OF SALEM, VIRGINIA THIS MAP WAS PRESENTED WITH THE CERTIFICATE OF ACKNOWLEDGMENT THERETO ATTACHED ADMITTED TO RECORD AT 3:44 O'CLOCK P.M. ON THIS 18 DAY OF September, 1990.

TESTE: JUNE LEE HIGGS  
 CLERK  
 BY: *James W. Kiffer*  
 DEPUTY CLERK