

APPROVED:

P. B. 3 PG. 60

Randolph M. Smith DATE: 8-29-88
Asst EXECUTIVE SECRETARY CITY OF SALEM PLANNING COMMISSION

John D. Abbott DATE: 8-29-88
CITY ENGINEER CITY OF SALEM VIRGINIA

NEW 15' DRAINAGE EASEMENT
BOUNDED BY CORNERS 1-2-3-4-5-6-7-8-1

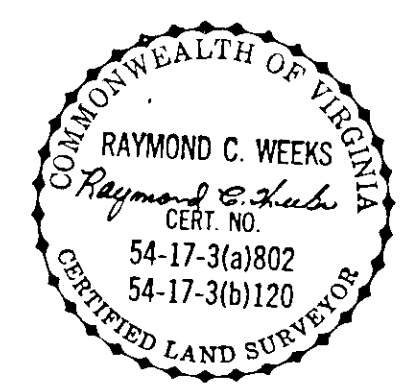
| | | |
|-----|-------------------|---------|
| 1-2 | S. 53° 08' 48" E. | 127.48' |
| 2-3 | S. 68° 18' 02" E. | 111.13' |
| 3-4 | N. 80° 23' 00" E. | 22.09' |
| 4-5 | S. 9° 37' 00" E. | 15.00' |
| 5-6 | S. 80° 23' 00" W. | 26.29' |
| 6-7 | N. 68° 18' 02" W. | 117.32' |
| 7-8 | N. 53° 08' 48" W. | 123.32' |
| 8-1 | N. 14° 32' 00" E. | 16.21' |

CONTAINS 0.090 ACRES

D. E. = DRAINAGE EASEMENT

IN THE CLERK'S OFFICE OF THE CIRCUIT COURT FOR
THE CITY OF SALEM, VIRGINIA, THIS MAP IS PRESENTED
ON August 31 1988, AND WITH THE CERTIFICATE OF
ACKNOWLEDGEMENT THERE TO ANNEXED IS ADMITTED
TO RECORD AT 2:01 O'CLOCK P.M.

JAMES F. TOBEY, Clerk
TESTE *Karow W Keller* deputy
CLERK UU

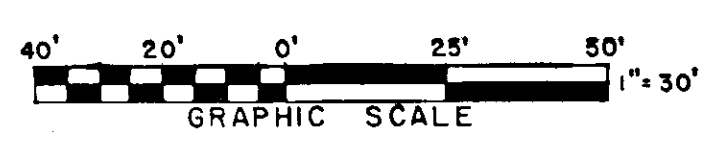
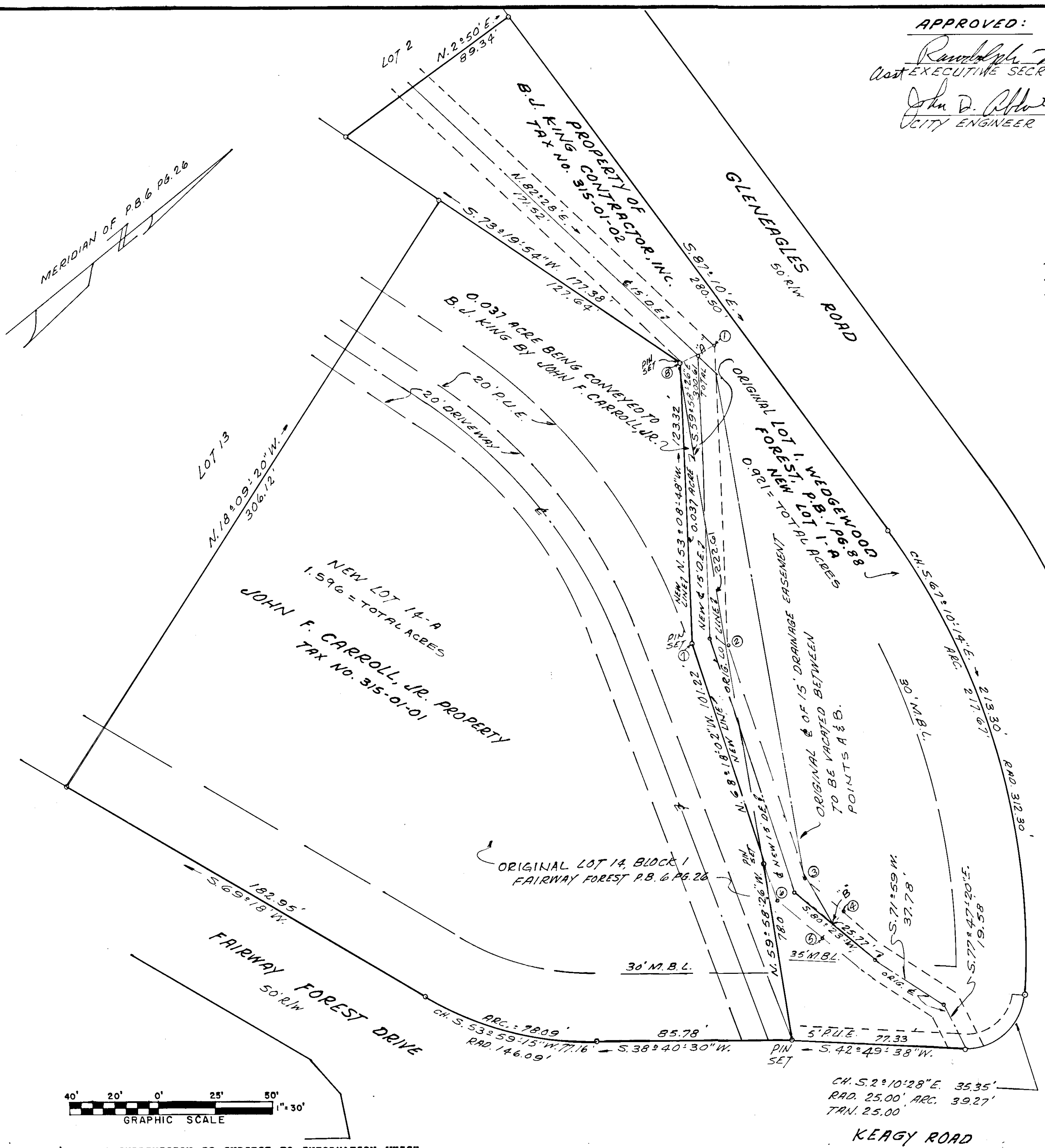


RESUBDIVISION FOR
B. J. KING CONTRACTOR, INC.

CREATING NEW LOT 1-A, WEDGEWOOD FOREST, P.B. 1 PG. 88
AND CREATING NEW LOT 14-A, BLOCK 1, FAIRWAY
FOREST, P.B. 6 PG. 26, AND ALSO CREATING NEW 15' D. E.
SALEM VIRGINIA
SCALE: 1" = 30'
AUG. 17, 1988

BY: T.P. PARKER & SON
ENGINEERS & SURVEYORS, LTD.

P. B. 3 PG. 60



THIS PLAT OF SUBDIVISION IS SUBJECT TO INFORMATION WHICH
MAY BE DISCLOSED BY A TITLE REPORT BY A LICENSED ATTORNEY.

CLOSURE BY: P.W.

KEAGY ROAD

W.O. 88-1012